



Separate critical data from noise

MEASUREspy is software that bridges the communication gap between complex data from measurement devices and data analysis software. *MEASUREspy* can easily find the important data in complicated, structured output files from complex data devices.

Eliminate errors

MEASUREspy virtually eliminates keyboarding or manual data entry, as well as the errors associated with these tasks. By working with increasingly sophisticated devices used throughout manufacturing industries, *MEASUREspy* makes critical data immediately available for analysis with *SQCpack* or other software programs.

You determine the rules

With *MEASUREspy*, you define what data will be used that was collected from your device. Then, select where you want the data to go; an *SQCpack* database, ASCII file, or an Excel spreadsheet. This eliminates the need to comb through thousands of lines of irrelevant data to identify critical figures. If, for example, you are interested only in data that is associated with diameters, you can define a set of filtering rules that report only the data associated with diameters.

Make informed decisions

With *MEASUREspy*, you choose the resulting format for your measurements. Save measurements, data, or files directly into *SQCpack*, Excel, or ASCII text files. As ASCII text files, your measurements can be used by most popular spreadsheet, database, and data analysis packages.

Combined with *SQCpack*, *MEASUREspy* makes your measurements available for SPC charts and analysis as soon as you take the readings—the best opportunity for getting value from them.

Hardware Requirements

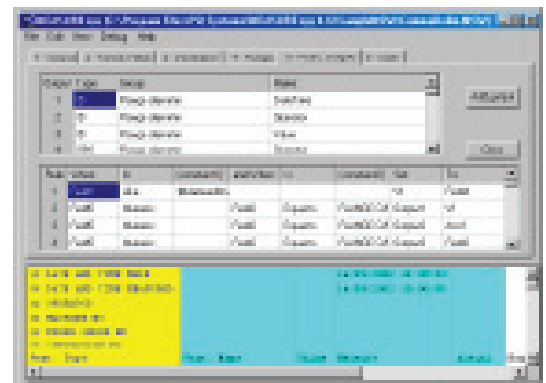
- Pentium PC with at least 32 MB of RAM; 64 MB of memory is recommended; at least 30 MB of free space
- Windows 2000, XP, Vista, or Windows 7

MEASUREspy works with:

- Bar code scanners
- Conductivity meters
- CMMs
- Data loggers
- Digitizers
- Electronic indicators
- Flow meters
- Hardness testers
- Moisture analyzers
- Scales
- Spectrometers
- Temperature & other sensors
- Tensile machines
- Virtually any data file created by a device

MEASUREspy:

- Helps you get value from your measurement machine investment
- Saves time by eliminating data input errors
- Combs through data to retrieve important items
- Puts data directly into *SQCpack*, Excel, or ASCII test files
- Handles data from complex devices easily
- Links directly with *SQCpack* to allow your SPC analysis to begin immediately



- Create rules to help identify conditions for data extraction.

Visit www.pqsystems.com to download your free 30-day trial.