

Quick Start Guide



SQCpack[®]
EZ

Copyright © 2008 by Productivity-Quality Systems, Inc.

All rights reserved. Printed in the United States of America. No part of this document may be reproduced, stored in a retrieval system, or transmitted, in any form or by any means, electronic, mechanical, photocopying, recording, or otherwise, without the prior written permission of Productivity-Quality Systems, Inc.

Table of Contents

SECTION 1	Installing <i>SQCpack</i> from CD	Page 2-6
-----------	--	----------

(If you already have *SQCpack EZ* installed, skip to Section 2.)

SECTION 2	Getting started	Page 7-8
-----------	------------------------	----------

How to use the sample database	Page 7
--------------------------------	--------

SECTION 3	Obtaining help	Page 9
-----------	-----------------------	--------

Help menu	Page 9
-----------	--------

User Guide	Page 9
------------	--------

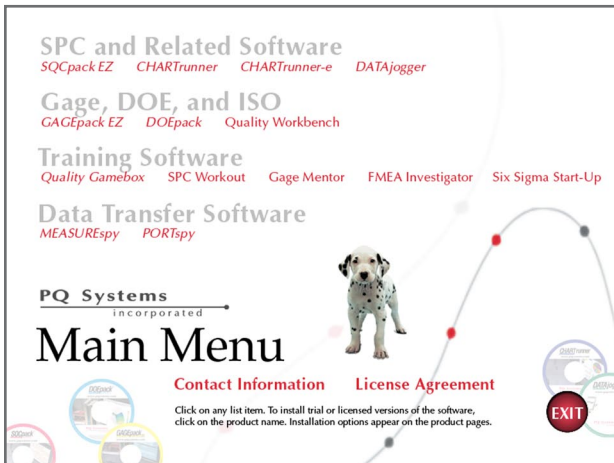
Website	Page 9
---------	--------

Tech support	Page 9
--------------	--------

Upgrade information	Page 9
---------------------	--------

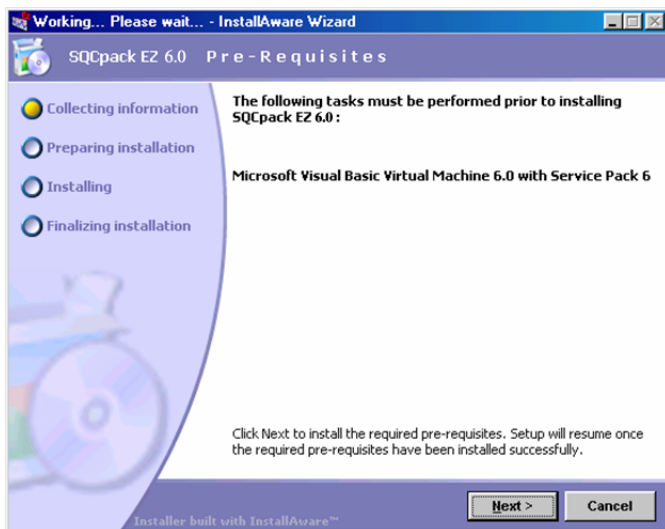
Installing SQCpack from CD

- 1 Insert the CDROM disk into the drive. The computer should detect the CD and automatically start the Main menu shown below. If you do not see the Main menu at this point, you will need to start the Main menu manually by double clicking on the setup.exe file in the root of your CDROM drive.

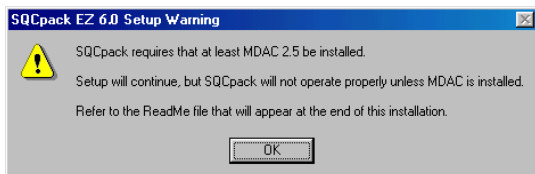


- 2 Click on the *SQCpack EZ* link in red.
- 3 Click on **Install licensed product**.
- 4 Click on **INSTALL**. Installation should begin.
(Be sure that you have your license certificate information handy.)
If you do not have license information, click on **Install 30-day trial**.
The license info can be entered later.
- 5 Click on the **Next** button to continue with the installation.

- 6 Some prerequisite components may need to be installed; if so, click **Next** to install the required components.

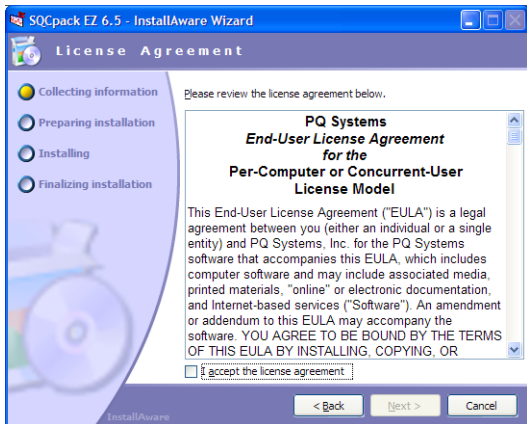


- 7 You may see the following message if you are installing on a version prior to Windows 2000. If so, click **OK** on the message to continue, and afterwards, refer to the ReadMe information.

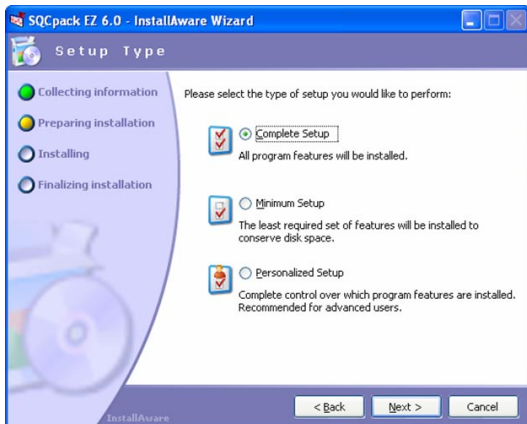


- 8 Click **Next**.

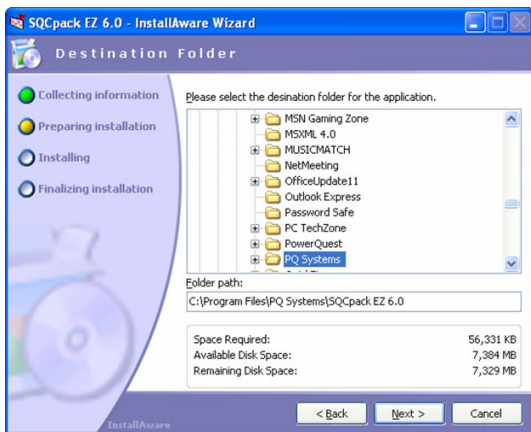
- 9 Read the license agreement and check the **I accept the license agreement** box then, click **Next**.



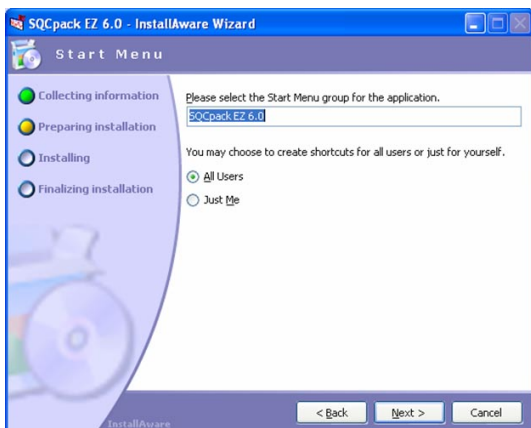
- 10 We recommend using the **Complete Setup** option; click **Next**.

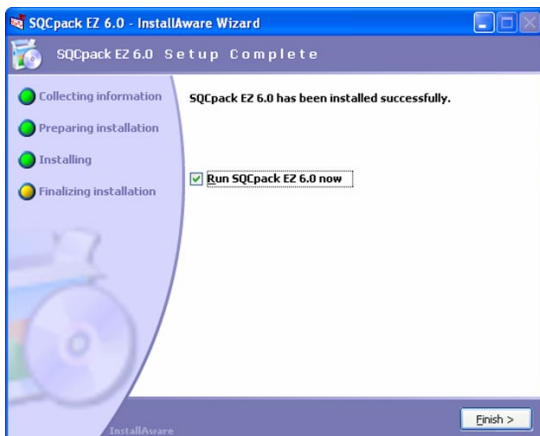


11 Click **Next** to use the default Program folder directory.



12 Click **Next**.

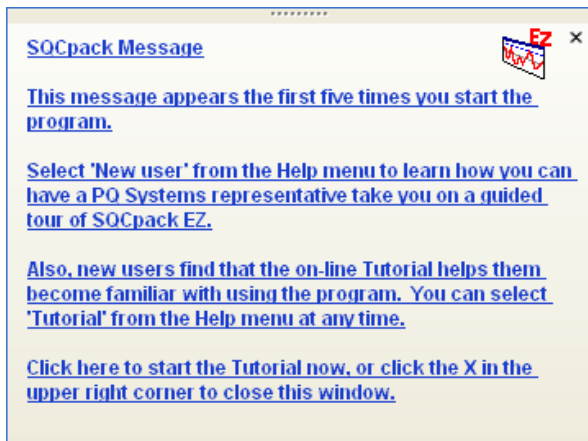


13 Click **Next**.**14** If you see a screen that says to restart, you will need to restart your computer for the changes to take effect. Otherwise, click **Finish**.

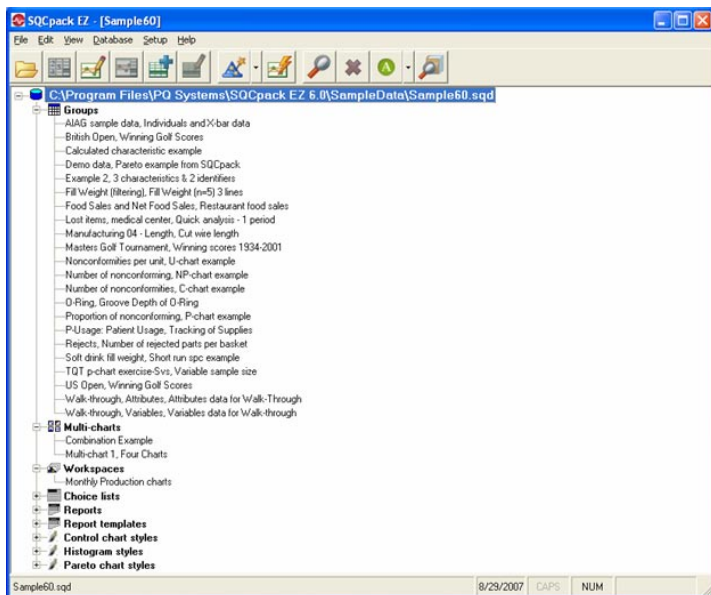
Getting started

How to use the sample database

When *SQCpack* starts the first five times, you will see the message below appear:



If you are a new *SQCpack* user, it is recommended that you use the Tutorial to help in getting started with the program.



It is suggested that you view the *SQPack* tutorial by clicking on the Help menu and selecting **Tutorial**. The tutorial will demonstrate how to create new groups to store characteristic data and draw charts.

Obtaining help

1 Help menu

The Help menu contains the choices shown:

User guide (PDF)	
C <u>o</u> ntents	
Tutorial	
Q <u>u</u> ality advisor	
F <u>o</u> rmula reference	
O <u>b</u> taining technical support	
N <u>e</u> w user	
<hr/>	
P <u>Q</u> Systems on the Web	▶
<hr/>	
A <u>b</u> out	

2 User Guide

For your convenience, we include a PDF version of the *SQCpack* User Guide.

To view this guide, click on the Help menu and select **User guide** (PDF). Use the **File > Print** options in Acrobat Reader to send the guide to your printer.

3 Web site

PQ Systems' web site includes a knowledge base that can be helpful for solving problems or answering questions that may arise while using *SQCpack*. To view a demo video on using *SQCpack*, or to check for program updates, click on the Help menu and select **PQ Systems on the Web**.

4 Tech support

Whenever you call tech support, you will need your license number and the version of *SQCpack* you are using. Both the license number and the current version number are displayed by selecting **Help > About** from the Menu.

In North and South America, call : 800-777-5060 or 937-885-2255

In Europe and Africa, call: 01704-871465

In Australia and Asia, call: 03-9770-1960

5 Upgrade information

Please refer to the 'Upgrading from a prior version of *SQCpack*' topic in the Help for information on upgrading to a newer major version of *SQCpack*, such as from 5.5 to 6.0.

PQ Systems

incorporated

IN NORTH AND SOUTH AMERICA

PQ Systems Headquarters
800-777-5060 or 937-885-2255
support@pqsystems.com

IN EUROPE AND AFRICA

PQ Systems Europe
01704-871465
tech@pqsys.demon.co.uk

IN AUSTRALIA AND ASIA

PQ Systems Pty. Ltd.
03-9770-1960
support@pqsystems.com.au

www.pqsystems.com