

# Quick Start Guide



***CHARTrunner***<sup>®</sup>

Copyright © 2009 by Productivity-Quality Systems, Inc.

All rights reserved. Printed in the United States of America. No part of this document may be reproduced, stored in a retrieval system, or transmitted, in any form or by any means, electronic, mechanical, photocopying, recording, or otherwise, without the prior written permission of Productivity-Quality Systems, Inc.

# Table of Contents

SECTION 1	<b>Installing <i>CHARTrunner</i> from CD</b>	Page 2-6
-----------	--	----------

(If you already have *CHARTrunner* installed, skip to Section 2)

SECTION 2	<b>Getting started</b>	Page 7-8
-----------	------------------------	----------

How to use the sample charts	Page 7
------------------------------	--------

SECTION 3	<b>Obtaining help</b>	Page 9
-----------	-----------------------	--------

Help menu	Page 9
-----------	--------

User Guide	Page 9
------------	--------

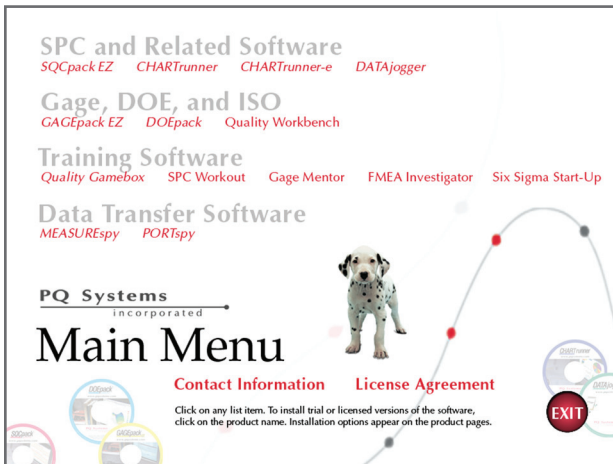
Website	Page 9
---------	--------

Tech support	Page 9
--------------	--------

Upgrade information	Page 9
---------------------	--------

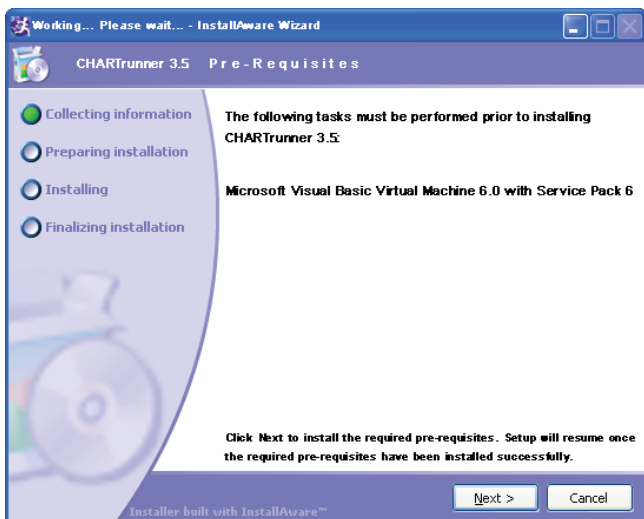
# Installing *CHARTrunner* from CD

- 1 Insert the CDROM disk into the drive. The computer should detect the CD and automatically start the Main menu shown below. If you do not see the Main menu at this point, you will need to start the Main menu manually by double clicking on the setup.exe file in the root of your CDROM drive.

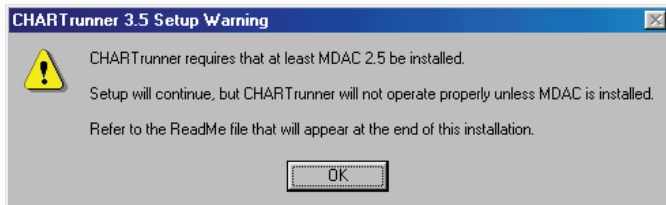


- 2 Click on the *CHARTrunner* link in red.
- 3 Click on **Install licensed product**.
- 4 Click on **INSTALL**. Installation should begin.  
(Be sure that you have your license certificate information handy.)  
If you do not have license information, click on **Install 30-day trial**.  
The license info can be entered later.

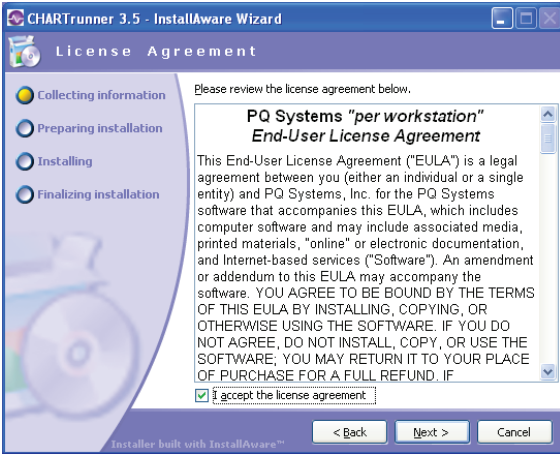
- 5 Click on the **Next** button to continue with the installation.
- 6 Some prerequisite components may need to be installed; if so, click **Next** to install the required components.



- 7 You may see the following message if you are installing on a version prior to Windows 2000. If so, click **OK** on the message to continue, and afterwards, refer to the ReadMe information.



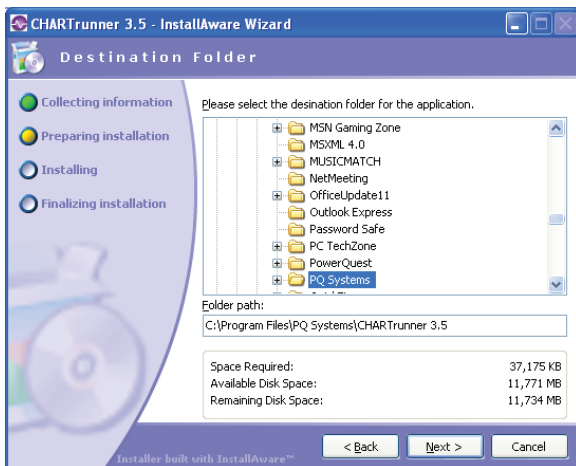
- 8 Read the license agreement and check the **I accept the license agreement** box. Setup will continue only if you agree to the terms of the license agreement.



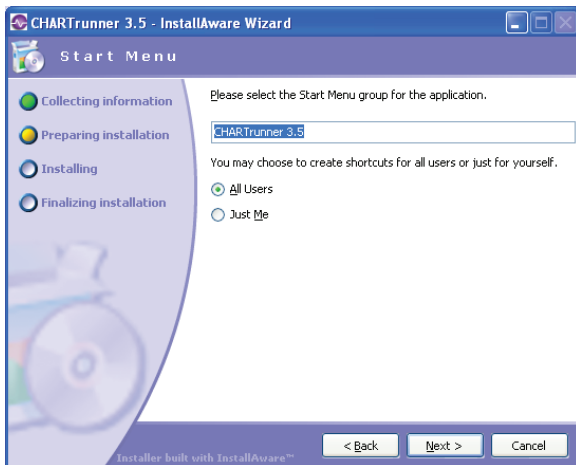
- 9 Select the **Complete Setup** option and click **Next**.

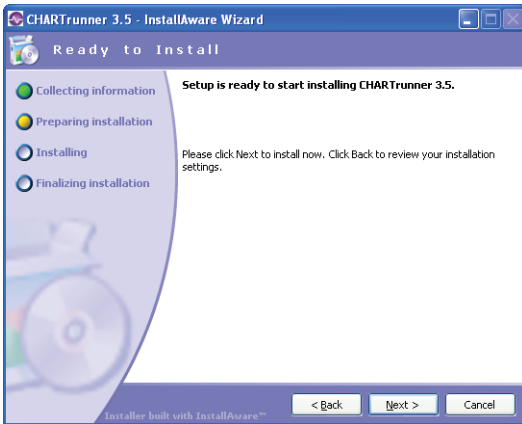


- 10 We recommend using the defaults for the destination location. To use these defaults, click **Next**.

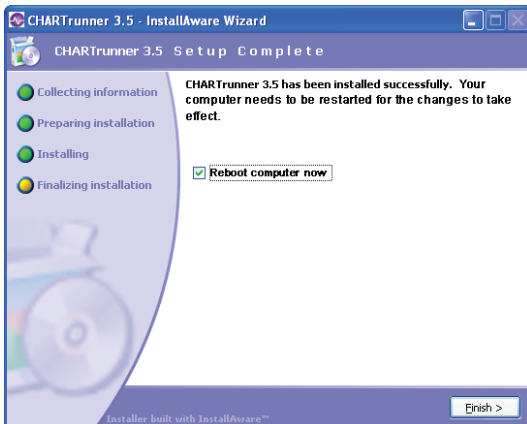


- 11 Click **Next** to use the default Start menu settings.



**12** Click Next.

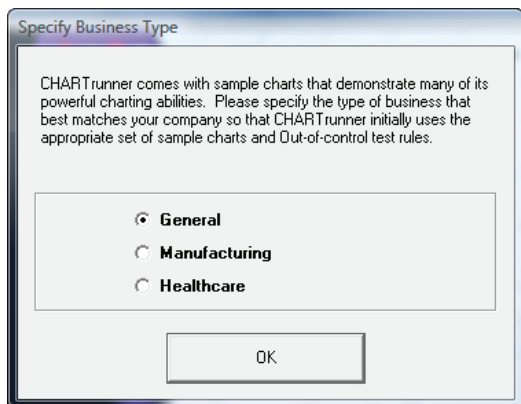
- 13** If **Reboot computer now** is checked, it will be necessary to reboot before using *CHARTrunner*. It is not necessary to reboot immediately, but you will need to restart the computer prior to using *CHARTrunner*. Click **Finish** to finalize the installation.



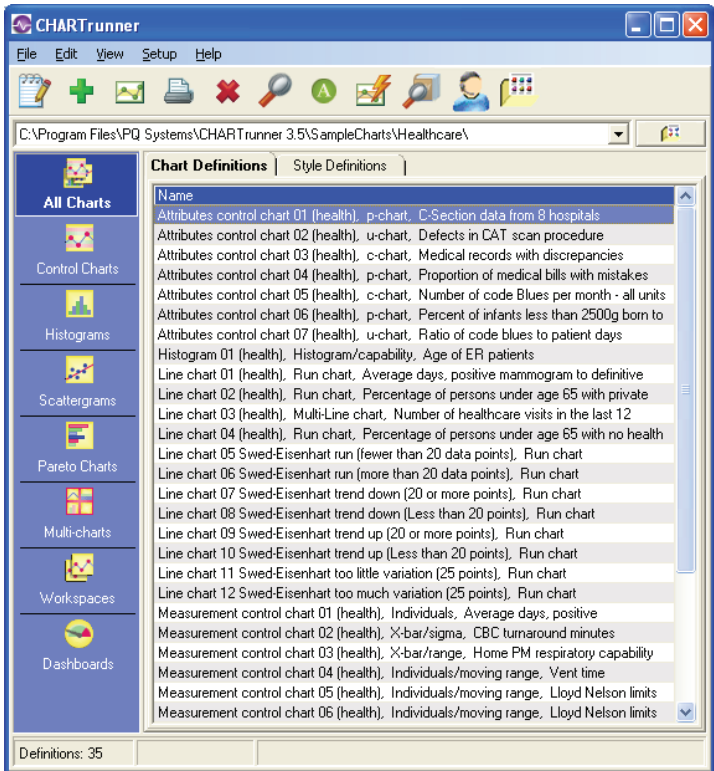
# Getting started

## How to use the sample charts

When *CHARTrunner* starts for the first time, you must select the type of sample charts that best fit your company. These sample charts will aid in using *CHARTrunner* and understanding its capabilities.



When *CHARTrunner* starts, the list of charts in the current working folder is displayed, as shown on the next page. Use your mouse or the standard keyboard navigation keys to move through the list of charts. Double click a chart to display the chart.

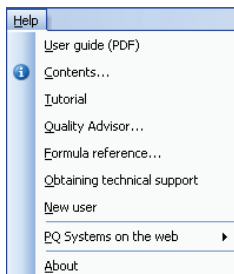


It is suggested that you view the *CHARRunner* tutorial by clicking on the Help menu and selecting **Tutorial**. The tutorial will demonstrate how to create a new chart definition. Before you create your own charts, we suggest that you use a working folder that is different from the sample chart folders to store your chart definitions.

# Obtaining help

## 1 Help menu

The Help menu contains the choices shown:



## 2 User Guide

For your convenience, we include a PDF version of the *CHARTrunner* User Guide. To view this guide, click on the Help menu and select **User guide** (PDF).

## 3 Website

PQ Systems' website includes a knowledge base section that can be helpful for solving problems or answering questions that may arise while using *CHARTrunner*. To view a demo video on using *CHARTrunner*, or to check for program updates, click on the Help menu and select **PQ Systems on the Web**.

## 4 Tech support

Whenever you call tech support, you will need your license number and the version of *CHARTrunner* you are using. Both the license number and the current version number are displayed by selecting **Help > About** from the Menu.


In North and South America, call : 800-777-5060 or 937-885-2255

In Europe and Africa, call: 01704-871465

In Australia and Asia, call: 03-9770-19605

Online chat: <http://www.pqsystems.com/chat>

## 5 Context sensitive help

Help buttons appear on many of the forms used in *CHARTrunner* and you can click on them to retrieve answers to your commonly-asked questions. 

# **PQ Systems**

incorporated

## **IN NORTH AND SOUTH AMERICA**

PQ Systems Headquarters  
800-777-3020 or 937-885-2255  
support@pqsystems.com

## **IN EUROPE AND AFRICA**

PQ Systems Europe  
01704-871465  
tech@pqsys.demon.co.uk

## **IN AUSTRALIA AND ASIA**

PQ Systems Pty. Ltd.  
03-9770-1960  
support@pqsystems.com.au

[www.pqsystems.com](http://www.pqsystems.com)